



# TRYGG



**TRANSPORT**



**TRACTOR**



**PRACTICAL INFORMATION**

# PRODUCT CATALOGUE

Valid from July 1, 2024

## **TRYGG Product Selector**



On our website you will find our practical product selector. With just a few clicks, you can easily find the right product that fits your tire dimensions.

By using our product selector, you save time while ensuring the correct chain for your purposes.

*Scan the QR-code  
or visit [nosted.com](http://nosted.com)*



## **Find your dealer**



TRYGG has a large dealer network with dealers across the continent. This ensures that you can always find the best solutions for your needs, no matter where you are! On our website you can easily find your local dealer.

*Scan the QR-code  
or visit [nosted.com](http://nosted.com)*

# TABLE OF CONTENTS



## CHAIN

## PAGE

### TRUCK

7

- Super Standard 9
- Super Tight 10
- Super Grizzly 11
- Super Snake 12
- Super Dual Triple 12
- Bull Horn 13
- Boss 14
- Scan Trac 15
- Easy Trac 16
- Semi Truck 16

### TRACTOR

17

- Fast Trac 19
- Moskus 20
- Tractor 22
- Safety Grip 23
- SMT Tractor 25
- SMT Flexi 26
- SM2D 28

### PRACTICAL INFO

29

- Chain installation 29
- Shortening 31
- Safety – warranty 32
- Chain use regulations 33

# TRYGG Chain Guaranteed Against Breakage

TRYGG chains guarantee against breakage on all transport and tractor chains! Over 85 years, we have developed solid expertise in material selection, shaping, welding, and hardening. The sum of these processes is the key to TRYGG quality. With steel sourced from West European steelworks and full control over production and product development, TRYGG guarantees quality at every stage. If, against all odds, you experience a breakage despite proper use, your dealer will assist with repairs or, if necessary, a replacement chain. Choosing TRYGG should be easy! Read more about the breakage guarantee on page 59.

**TRYGG – preferred for a reason!**

## Contact Us

We hope and believe you will find the products that meet your needs in this catalogue. If you need assistance, feel free to contact us, or visit our website at [www.nosted.com/trygg](http://www.nosted.com/trygg) to learn more about our products. There, you can easily use our product selector to find the right product for your needs, watch installation videos, and get recommendations for use, as well as see which spare parts and tools are available and relevant for your product.



**Kjetil Aukland**  
Sales Director  
kjetil@nosted.com  
+47 982 51 782



**Kenneth Holen**  
Sales Manager Nordics  
kenneth.holen@nosted.com  
+47 955 55 744



**Audrius Barsauskas**  
Sales Manager, Eastern Europe  
audrius.barsauskas@nosted.com  
+37 069 938 454



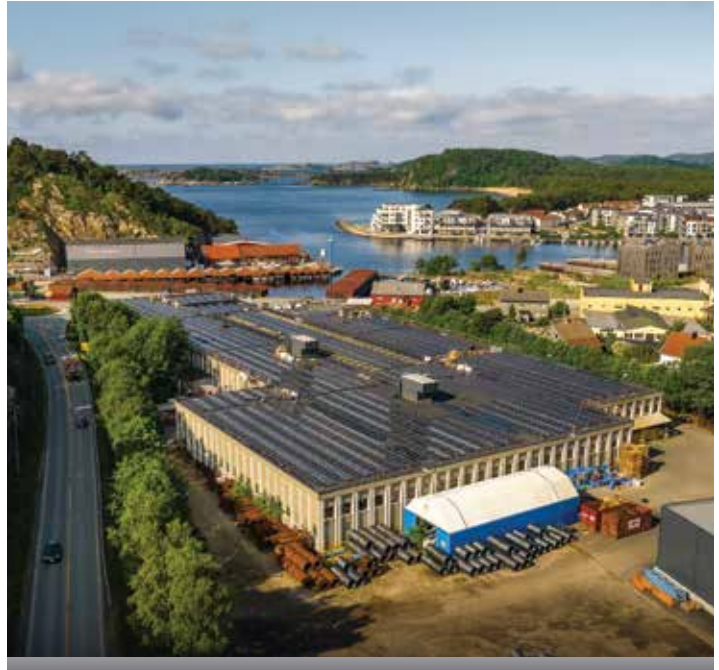
**Olaf Lindtveit**  
Key Account Manager  
olaf@nosted.com  
+47 958 88 255

# About Us

TRYGG is produced by Norway's only chain manufacturer, Nøsted &. We continuously work to minimize our environmental footprint and have a strong focus on energy efficiency.

*With support from Innovation Norway and Enova, we have developed the industry's most energy-efficient chain production method. We have installed solar panels on the roofs of all our production facilities in Norway, generating up to 2 GWh per year. Norwegian grid electric is also 99% renewable. Together these give us market leading sustainable energy use.*

*We also use only steel from West European steel mills – giving us shorter transport distances and lower emissions. Together with the certifications ISO 9001 and ISO 14001, this makes our chain production probably the most environmentally friendly in the world.*



*Did you know that the CO2 emissions from the production of the steel used in TRYGG chains are less than half of the emissions from steel produced in China or other parts of Europe? In many cases, it is even three to four times lower.*



# BioCorr

We are introducing BioCorr as a surface treatment on several of our chain models. The chains are surface-treated to protect the product during storage and transport. During use, the surface treatment on any chain in contact with the ground will wear off. Unlike conventional protection methods such as paint, which release harmful chemicals and microplastics, BioCorr is based on biodegradable materials. Therefore, it is a more environmentally friendly alternative that helps reduce damage to nature.

At the same time, BioCorr is a more energy-efficient process and does not require acid treatment that electroplating does.

## What is BioCorr?

BioCorr is a water-based, bio-based, and biodegradable rust protection agent designed for the preservation of metals during storage and transport. BioCorr provides multi-metal protection and is an environmentally friendly alternative to petroleum-based products. BioCorr is VOC-free, and the formulation is biodegradable.

By choosing TRYGG tire chains, you are helping to protect nature from toxic substances!







# TRUCK



**SUPER STANDARD**



**SUPER TIGHT**



**SUPER GRIZZLY**



**SUPER SNAKE**



**SUPER DUAL TRIPLE**



**BULL HORN**



**BOSS**



**SCAN TRAC**



**EASY TRAC**



**SEMI TRUCK**

TRYGG tire chains are available for all types of applications. From light chains with high comfort via conventional studded chains with square links to floating diamond- patterned chains for heavy machinery and difficult conditions.

## COMPARISON OF PROPERTIES FOR TRYGG TRUCK CHAINS

	Standard	Tight	Grizzly	Snake	Dual Triple	Bull Horn	Boss	Scan Trac	Easy Trac	Semi Truck
Light Truck	x								x	x
Heavy Transport		x		x			x	x		
Logging Truck		x		x	x	x				
Truck Trailer									x	
Bus	x							x		x
Crane Truck		x	x	x			x			

Traction on ice largely depends on the weight of the vehicle. Too much chain relative to the weight results in reduced traction.



# SUPER STANDARD

Super Standard is very well-suited for buses and service tasks, as well as for anyone who occasionally needs to apply chains. It is a light-weight and strong chain that is easy to handle. The chain is alloyed with, among other elements, boron, manganese, and nickel to achieve optimal wear resistance and toughness.

Track Chain: 7 mm. Side Chain: 6x34 mm.



## DETAILS

7x9 mm Square Stud. The square stud offers several advantages, such as a larger hardened surface, sharp edges even on worn studs, and thus improved traction.

The table provides an overview of the most commonly used tire sizes. For a complete product overview, please see our product selector at [www.nosted.com/trygg](http://www.nosted.com/trygg)

TIRE	WHEEL	ITEM NO..	TIRE	WHEEL	ITEM NO..	TIRE	WHEEL	ITEM NO..
8,25	16	490063	295/70*	19,5	490392	295/80*	22,5	490384
225/85	16	490053	295/75*	19,5	490392	295/80* WB	22,5	490394
235/85	16	490063	305/70*	19,5	490392	305/70*	22,5	490393
8,75	16,5	490052	385/65	19,5	490413	315/60*	22,5	490383
8.5R	17,5	490053	11,00*	20	490384	315/70*	22,5	490393
205/75	17,5	490052	12,00	20	490385	315/75*	22,5	490384
215/70	17,5	490052	365/80	20	490424	315/80*	22,5	490394
225/75	17,5	490053	11/70*	22,5	490373	385/55	22,5	490413
265/70	17,5	490182	12R*	22,5	490384	385/65	22,5	490424
15R	19,5	490413	12R* WB	22,5	490394	305/75*	24,5	490384
235/70	19,5	490073	275/70*	22,5	490373	315/75*	24,5	490394
265/70	19,5	490084	295/60*	22,5	490392			
285/70	19,5	490187	295/70*	22,5	490383			

\* Can be replaced by 490384 or 490394.  
WB=wider base.



The chain comes in a practical, durable bag along with installation instructions

# SUPER TIGHT

## TRUCK DRIVER'S FAVORITE!

Super Tight has 50 percent more cross-links than Standard, ensuring that at least two cross-links are always in contact with the ground. The chain is easy to handle, strong, and provides excellent traction. It is alloyed with elements such as boron, manganese, and nickel for optimal wear resistance and toughness.

Track Chain: 7 mm. Side Chain: 6x34 mm.



### DETAILS

7x9 mm square stud. The square stud offers several advantages, such as a larger hardened surface, sharp edges even on worn studs, and therefore improved traction.

The table provides an overview of the most commonly used tire sizes.

For a complete product overview, please see our product selector at [www.nosted.com/trygg](http://www.nosted.com/trygg)

TIRE	WHEEL	ITEM NO..	TIRE	WHEEL	ITEM NO..	TIRE	WHEEL	ITEM NO..
8,25	15	492063	11,00*	20	492384	295/80*	22,5	492384
235/85	16	492063	275/60	20	492084	295/80* WB	22,5	492394
245/85	16	492073	365/80	20	492424	305/60*	22,5	492392
280/85	16	492183	11R	22,5	492374	305/70*	22,5	492393
315/80	16	492392	11R* WB	22,5	492384	315/60*	22,5	492383
235/75	17,5	492063	11/70*	22,5	492373	315/70*	22,5	492393
245/70	17,5	492073	12R* WB	22,5	492394	315/75*	22,5	492384
295/75*	19,5	492392	13R WB	22,5	492395	315/80*	22,5	492394
235/70	19,5	492073	275/70*	22,5	492373	315/80 WB	22,5	492395
265/70	19,5	492084	275/80*	22,5	492374	435/65	22,5	492446
285/70	19,5	492187	285/75*	22,5	492374	445/65	22,5	492446
305/70*	19,5	492392	295/60*	22,5	492392	315/75*	24,5	492394
10,00*	20	492374	295 /70*	22,5	492383			

\* Can be replaced by 492384 or 492394.  
WB=wider base.



The chain comes in a practical, durable bag along with installation instructions.

To order, contact [corporate@nosted.com](mailto:corporate@nosted.com) or +47 37 25 62 00

# SUPER GRIZZLY

Super Grizzly is a highly aggressive chain designed for heavy vehicles under demanding conditions. With double the number of cross-links, you will always have at least 3-4 cross-links in contact with the ground. The chain is alloyed with elements such as boron, manganese, and nickel for optimal wear resistance and toughness.

Track Chain: 7 mm. Side Chain: 7x42 mm.



## DETAILS

7x9 mm square stud. The square stud offers several advantages, such as a larger hardened surface, sharp edges even on worn studs, and therefore improved traction.

The table provides an overview of the most commonly used tire sizes.

For a complete product overview, please see our product selector at [www.nosted.com/trygg](http://www.nosted.com/trygg)

TIRE	WHEEL	ITEM NO..	TIRE	WHEEL	ITEM NO..	TIRE	WHEEL	ITEM NO..
10,00	20	498374	12R BB	22,5	498394	315/80 BB	22,5	498395
11,00	20	498384	13R BB	22,5	498395	315/75	24,5	498394
275/80	20	498374	295/80	22,5	498384	295/80 BB	24,5	498394
285/75	20	498374	295/80 BB	22,5	498394	315/75	24,5	498384
11R	22,5	498374	315/75	22,5	498384			
11R BB	22,5	498384	315/80	22,5	498394			



The chain comes in a practical, durable bag along with installation instructions

# SUPER SNAKE

## SUPER SNAKE – steering chain

TRYGG Super Snake is very popular as a steering chain in Canada and the USA. It is a comfortable chain to drive with, ensuring that the chain is always in contact with the ground. The last two side straps are fitted with a ring instead of a hook, making it easy to get a tight and well-fitted chain on the wheel. The chain is alloyed with elements such as boron, manganese, and nickel for optimal wear resistance and toughness.

Track Chain: 7 mm\*. Side Strap: 7 mm. Side Chain: 6x34 mm.



### DETALJER

7x9 mm square stud. The square stud offers several advantages, such as a larger hardened surface, sharp edges even on worn studs, and therefore improved traction.



The table provides an overview of the most commonly used tire sizes. For a complete product overview, please see our product selector at [www.nosted.com/trygg](http://www.nosted.com/trygg)

TIRE	WHEEL	ITEM NO..
12R	22,5	449222
295/80	22,5	449384
315/80	22,5	449394
385/55	22,5	449413
385/65	22,5	449424

\* Super Snake is available in an 8 mm size upon request



The chain comes in a practical, durable bag along with installation instructions

# SUPER DUAL TRIPLE

Provides excellent traction, especially on uneven surfaces where one twin wheel may have less ground pressure. Super Dual Triple is available in Standard with five free links between each cross-link or as Tight with three free links between each cross-link. The chain is alloyed with elements such as boron, manganese, and nickel for optimal wear resistance and toughness.

Track Chain: 7 mm. Side Chain: 6x34 mm.



### DETAILS

7x9 mm square stud. The square stud offers several advantages, such as a larger hardened surface, sharp edges even on worn studs, and therefore improved traction.



The table provides an overview of the most commonly used tire sizes. For a complete product overview, please see our product selector at [www.nosted.com/trygg](http://www.nosted.com/trygg)

TIRE	WHEEL	ITEM NO..	TIRE	WHEEL	ITEM NO..
10,00	20	494374	295/80	22,5	494384
11,00	20	494384	295/80 TETT	22,5	494884
11R	22,5	494374	315/80	22,5	494394
12R	22,5	494384	315/80 TETT	22,5	494894
275/80	22,5	494374	315/75	24,5	494394



The chain comes in a practical, durable bag along with installation instructions

# BULL HORN

For long hauls with logging trucks, this square chain with “bull horn” studs is the professional choice. The Z-pattern provides continuous ground contact with good grip and directional stability. The ingenious lock with sliding side chain tensioning automatically adapts to all tires - regardless of brand and type.

For dual wheels, Bull Horn is specially adapted for the right and left sides and is packed in separate bags with their own item numbers. It can be supplied both with a Z-pattern and as ladder chains.

Track Chain: 8 mm. Side Strap: 8x8 mm. Side Chain: 8x32 mm.



## DETAILS

The sturdy V-studs provide long durability and the necessary strength.

The table provides an overview of the most commonly used tire sizes.

For a complete product overview, please see our product selector at [www.nosted.com/trygg](http://www.nosted.com/trygg)

TIRE	L/R	MODELL	S / D	DIM	UNIT	ITEM NO.
315/70-22,5	<b>Left</b>	TRYGG, zz+zz, v-stud	bz/bz	Dual	8 mm	1/2 pair 469500
315/70-22,5	<b>Right</b>	TRYGG, zz+zz, v-stud	bz/bz	Dual	8 mm	1/2 pair 469501
315/80-22.5	<b>Left</b>	TRYGG, zz+zz, v-stud	bz/bz	Dual	8 mm	1/2 pair 469525
315/80-22.5	<b>Right</b>	TRYGG, zz+zz, v-stud	bz/bz	Dual	8 mm	1/2 pair 469526
11.00-20, 12-22.5, 295/80-22.5, 315/80-22.5	<b>Left</b>	TRYGG ladder + zz, v-stud	bz/stand	Dual	8 mm	1/2 pair 469515
11.00-20, 12-22.5, 295/80-22.5, 315/80-22.5	<b>Right</b>	TRYGG ladder + zz, v-stud	bz/stand	Dual	8 mm	1/2 pair 469516
11.00-20, 12-22.5, 295/80-22.5, 315/80-22.5	<b>Left</b>	TRYGG, ladder + zz, stud	z/stand	Dual	8 mm	1/2 pair 469505
11.00-20, 12-22.5, 295/80-22.5, 315/80-22.5	<b>Right</b>	TRYGG, l stige + zz, plain	z/stand	Tvilling	8 mm	1/2 par 469506

# BOSS

## PERFECT FOR GARBAGE TRUCKS

TRYGG BOSS is a close-linked, solid chain that is perfect for use on heavy garbage trucks and construction vehicles. Garbage trucks face the challenge of being light in the morning and extremely heavy in the afternoon; TRYGG BOSS addresses this issue. It can also be advantageously used on smaller vehicles with high axle pressure. The chain is made of top-quality boron steel.

Track Chain: 8 mm\*. Side Chain: 8x50 mm.



### DETAILS

8 mm round stud. Boss features oversized studs, meaning studs with a larger diameter than the link they are mounted on.

The table provides an overview of the most commonly used tire sizes.

For a complete product overview, please see our product selector at [www.nosted.com/trygg](http://www.nosted.com/trygg)

TIRE	WHEEL	DIM	ITEM NO.	TIRE	WHEEL	DIM	ITEM NO.
6,50	16	8	452362	315/70	22,5	8	452393
10,00	20	8	452374	315/75	24,5	8	452394
11,00	20	8	452384	315/80	22,5	8	452394
11R	22,5	8	452374	315/80 BB	22,5	8	452395
12R	22,5	8	452384	350/75	22,5	8	452424
295/80	22,5	8	452384	385/65	22,5	8	452424
305/70	22,5	8	452393				

\* BOSS is available in a 9.5 mm size upon request.



To order, contact [corporate@nosted.com](mailto:corporate@nosted.com) or +47 37 25 62 00

# SCAN TRAC

Scan Trac is a lightweight chain that is excellent for buses and trucks. It is quick to install, provides good traction, and offers a smooth ride. Environmentally friendly, durable, and cost-effective. Packaged as half-pairs in user-friendly packaging.

Track Chain: 5x5 mm. Side Chain: 5x34 mm.



## DETAILS

This square chain features wear bars (flat studs) that ensure safe and comfortable driving.

The table provides an overview of the most commonly used tire sizes.

For a complete product overview, please see our product selector at [www.nosted.com/trygg](http://www.nosted.com/trygg)

TIRE	WHEEL	ITEM NO.	TIRE	WHEEL	ITEM NO.	TIRE	WHEEL	ITEM NO.
8,25	15	477081	385/65	19,5	477319	255/70	22,5	477085
33x12,50	15	477250	425/55	19,5	477323	295/70	22,5	477088
225/70	15	477079	435/50	19,5	477329	295/80	22,5	477110
255/75	15	477060	445/45	19,5	477329	305/60	22,5	477224
7,00	16	477079	9.00	20	477090	305/70	22,5	477100
215/75	16	477079	10.00	20	477100	315/60	22,5	477226
215/85	16	477060	11.00	20	477110	315/70	22,5	477100
225/75	16	477070	12.00	20	477120	315/80	22,5	477112
235/80	16	477080	14/80	20	477120	315/80 BB	22,5	477120
245/75	16	477080	14,5-20	20	477320	345/75	22,5	477120
265/75	16	477127	365/80	20	477320	350/75	22,5	477130
280/70	16	477083	385/95	20	477321	385/55	22,5	477319
280/85	16	477250	10	22	477110	385/65	22,5	477320
8,75	16,5	477070	10R	22,5	477090	385/65 BB	22,5	477322
9,5	16,5	477080	11R	22,5	477100	425/65	22,5	477325
265/70	17	477081	12R	22,5	477110	445/50	22,5	477190
9,5R	17,5	477081	13R	22,5	477120	445/65	22,5	477327
225/75	17,5	477080	16,5	22,5	477325	11R	24,5	477110
245/70	17,5	477126	18	22,5	477327			

Spare sections are available as accessories on our website.



To order, contact [corporate@nosted.com](mailto:corporate@nosted.com) or +47 37 25 62 00

# EASY TRAC

Easy Trac is very lightweight and provides safe and comfortable driving. It works well on drive wheels and is excellent on front wheels and trailers. The chain offers good traction and a smooth ride. It is packaged as half-pairs in user-friendly packaging.

Track Chain: 5x5 mm. Side Chain: 5x34 mm.



## DETAILS

5x5 mm square chain without studs.

The table provides an overview of the most commonly used tire sizes.

For a complete product overview, please see our product selector at [www.nosted.com/trygg](http://www.nosted.com/trygg)

TIRE	WHEEL	ITEM NO..	TIRE	WHEEL	ITEM NO..	TIRE	WHEEL	ITEM NO..
385/65	19,5	F480319	10,00	22,5	F480110	315/70	22,5	F480100
10,00	19,5	F480100	11R	22,5	F480100	315/80	22,5	F480112
11,00	19,5	F480110	12R	22,5	F480110	385/55	22,5	F480319
14,5	20	F480320	295/80	22,5	F480110	385/65	22,5	F480320
365/80	20	F480320	305/70	22,5	F480100	11R	24,5	F480110

# SEMI TRUCK

Semi Truck is a cost-effective quality chain provided in a compact design. It is certified according to Norwegian standards and comes in convenient bags.

Track Chain: 7 mm. Side Chain: 6x38 mm.



## DETAILS

8 mm round stud. Semi Truck features oversized studs, meaning studs with a larger diameter than the link they are mounted on.

The table provides an overview of the most commonly used tire sizes.

For a complete product overview, please see our product selector at [www.nosted.com/trygg](http://www.nosted.com/trygg)

TIRE	WHEEL	ITEM NO..	TIRE	WHEEL	ITEM NO..	TIRE	WHEEL	ITEM NO..
11,00	20	F492384	295/80	22,5	F492384	315/80	22,5	F492394
11R	22,5 BB	F492384	305/70	22,5	F492393	315/75	24,5	F492394
12	22,5	F492384	315/70	22,5	F492393			

To order, contact [corporate@nosted.com](mailto:corporate@nosted.com) or +47 37 25 62 00







# TRACTOR



**FAST TRAC**



**MOSKUS**



**TRACTOR**



**SAFETY GRIP  
5x5 mm**



**SAFETY GRIP  
6x7 mm**



**SMT / SMT FLEXI**



**SM2D TRACTOR**

The spectrum of TRYGG tire chains for tractors covers all purposes. From roading to forestry and everything inbetween. For both professional and hobby use. TRYGG tractor chains are the most flexible chains on the market. Shortening or extension of tire chains has never been easier.

## COMPARISON OF PROPERTIES FOR TRYGG TRACTOR CHAINS

	Fast Trac	Moskus	Tractor	Safety Grip	SMT/SMT Flexi	SM2D
Road	*****	****	****	*****	**	*
Terrain	***	****	***	**	*****	*****
Weight (lightness)	***	****	***	*****	**	*

# FAST TRAC



## FAST TRAC LIGHT CHAIN WITH SQUARE STUDS – BESTSELLER!

The professionals' clear first choice for longer snow plowing tasks. The chain should have minimal slack, making it suitable for machines with limited space around the tires. Fully floating pattern with studded side straps for superior traction on snow and ice.

Track Chain: 8 mm. Side Strap: 6 mm. Side Chain: 5x34 mm.



### DETAILS

The light chain is equipped with 7x9 mm extended square studs that provide superior grip.

*Pre-cut or adjust it yourself - the choice is yours! Chains with item numbers ending in a letter are pre-cut to fit the tire's dimensions. Item numbers without a letter fit multiple dimensions and will require adjustment.*

## FAST TRAC STANDARD

The table provides an overview of the most commonly used tire sizes.

For a complete product overview, please see our product selector at [www.nosted.com/trygg](http://www.nosted.com/trygg)

TIRE	WHEEL	ITEM NO.	TIRE	WHEEL	ITEM NO.	TIRE	WHEEL	ITEM NO.
11,2	24	581035	440/65	28	581030	600/65	34	581010
13,6	24	581035	480/65	28	581025	540/65	38*	581010
380/70	24	581030	540/65	28	581020	600/65	38	581010
420/70	24	581030	16,9	30	581020	650/60	38	581010
440/65	24	581030	16,9	34	581020	650/65	38	581010
480/65	24	581025	460/85	34	581015	710/70	38	581008
540/65	24	581025	480/70	34	581015	650/65	42	581008
11,2	28	581035	520/70	34	581015	710/65	42	581008
13,6	28	581035	540/65	34	581015			

\* Extension section 581-01 may be required

## FAST TRAC TAILORED

The table provides an overview of the most commonly used tire sizes.

For a complete product overview, please see our product selector at [www.nosted.com/trygg](http://www.nosted.com/trygg)

TIRE	WHEEL	ITEM NO.	TIRE	WHEEL	ITEM NO.	TIRE	WHEEL	ITEM NO.
300/70	24	581035C	280/85	28	581035A	520/70	38	581010B
340/80	24	581035A	440/65	28	581030A	540/65	38	581015A
340/85	24	581035A	480/65	28	581025B	540/80	38	581010B
380/70	24	581030D	520/60	28	581025B	580/70	38	581010B
380/85	24	581030C	600/60	28	581010F	650/60	38	581010H
400/80	24	581030C	480/80	34	581015D	650/65	38	581010A
405/70	24	581030D	520/70	34	581015B	710/70	38	581008A
420/70	24	581030C	540/65	34	581015D	710/60	42	581008A
440/65	24	581030D	600/65	34	581010C			
540/65	24	581025B	650/65	34	581010H			

# MOSKUS

**ALL-ROUND CHAIN FOR THOSE WHO USE THE TRACTOR FOR VARIOUS TASKS AND SURFACES!**

TRYGG Moskus is a versatile chain with 6x6 mm square links in the track that is suitable for farm work, snow removal, forestry, and occasionally traveling on the road. The 6 mm welded V-studs provide excellent traction for snow removal or driving in the forest. The chain floats well on the tire, making it comfortable to use on the road. The tightening rails allows you to easily adjust from loose to tight, depending on the surface and speed you are operating in.

Track Chain: 6x6 mm. Side Strap: 6 mm. Side Chain: 5x34 mm.



## DETAILS

The 6x6 mm studs are welded onto every other link. The chain is stable while also providing excellent traction in the forest and on icy surfaces.

The table provides an overview of the most commonly used tire sizes.

For a complete product overview, please see our product selector at [www.nosted.com/trygg](http://www.nosted.com/trygg)

TIRE	WHEEL	ITEM NO..	TIRE	WHEEL	ITEM NO..	TIRE	WHEEL	ITEM NO..
360/80	20	515707	480/65	28	515721	440/80	38	515745
380/70	20	515707	520/60	28	515723	520/65	38	515748
405/70	20	515712	540/65	28	515732	520/85	38	515761
420/65	20	515712	600/60	28	515725	540/65	38	515749
300/80	24	515709	600/65	28	515742	540/80	38	515761
380/70	24	515712	14,9	30	515727	580/70	38	515751
405/70	24	515712	380/85	30	515727	600/60	38	515751
420/65	24	515712	16,9	30	515745	600/65	38	515751
440/65	24	515712	420/85	30	515745	620/70	38	515758
460/65	24	515719	600/70	30	515742	650/60	38	515758
16,9	24	515719	620/75	30	515752	650/65	38	515758
420/70	24	515718	16,9	34	515745	650/75	38	515765
400/80	24	515719	420/85	34	515745	650/85	38	515770
420/85	24	515720	540/65	34	515739	700/65	38	515767
440/80	24	515720	540/70	34	515740	710/60	38	515765
480/65	24	515720	580/65	34	515740	710/70	38	515767
540/65	24	515732	480/80	34	515748	710/60	42	515765
605/80	25	515742	600/65	34	515751	580/70	42	515757
23,5	25	515742	600/70	34	515751	620/70	42	515768
11,2	28	515709	650/65	34	515758	620/80	42	515768
320/70	28	515709	700/70	34	515767	650/75	42	515769
360/70	28	515712	710/70	34	515767	710/65	42	515770
400/80	28	515719	16,9	38	515754	710/70	42	515770
420/70	28	515719	20,8	38	515761			
480/60	28	515720	420/85	38	515754			

To order, contact [corporate@nosted.com](mailto:corporate@nosted.com) or +47 37 25 62 00

# MOSKUS



## TIGHTENING CHAIN FOR EASIER USE!

What makes MOSKUS unique is the use of a tightening chain, which allows the chain to be mounted relatively loosely on the track and easily tightened using the tightening chain. When used in the forest, you want the chain to be relatively loose to be as self-cleaning as possible. When driving on the road, you want the chain to be tighter to prevent it from hitting the surface. Adjusting the tightness is simple and can be done in just a few minutes.



# TRACTOR

Tractor is for those who have limited use for chains but want one that provides excellent traction. It is well-suited for machines with minimal clearance around the tires. Initial adjustment during first-time installation should be anticipated.

Track Chain: 7 mm. Side Strap: 6 mm. Side Chain: 5x34 mm.



## DETAILS

Light chain with extra-long 8 mm studs.

The table provides an overview of the most commonly used tire sizes.

For a complete product overview, please see our product selector at [www.nosted.com/trygg](http://www.nosted.com/trygg)

TIRE	WHEEL	ITEM NO.	TIRE	WHEEL	ITEM NO.	TIRE	WHEEL	ITEM NO.
420/65	20	F580035	440/80	28	F580020	480/70	34	F580020
11,2	24	F580035	480/70	28	F580020	520/70	34	F580015
13,6	24	F580035	520/60	28	F580025	540/65	34	F580015
340/85	24	F580030	540/65	28	F580025	600/65	34	F580015
380/70	24	F580030	600/60	28	F580025	540/65*	38	F580015
380/85	24	F580030	16,9	30	F580010	540/80	38	F580010
420/70	24	F580030	440/80	30	F580010	580/70	38	F580010
440/65	24	F580030	480/70	30	F580020	650/60	38	F580010
480/65	24	F580030	540/65	30	F580020	650/65	38	F580010
540/65	24	F580025	16,9	34	F580020	650/65	42	F580010
440/65	28	F580025	420/85	34	F580020	710/60	42	F580008
480/65	28	F580025	18,4	34	F580020	710/65	42	F580008

\* Extension section 581-01 may be required

# SAFETY GRIP

## 5x5 mm

Safety Grip 5 mm is a super-lightweight and versatile tractor chain for use in lighter tasks. It is the obvious choice for those who do not achieve good traction with studded tires, frequently put the chain on and off, or drive on varying road and surface conditions.

Track Chain: 5x5 mm. Side Strap: 5x5 mm. Side Chain: 5x34 mm.



### DETALJER

Horizontal welded long and high wear bars (flat studs) that provide very good grip and durability.

*Pre-cut or adjust it yourself - the choice is yours! Chains with item numbers ending in a letter are pre-cut to fit the tire's dimensions. Item numbers without a letter fit multiple dimensions and will require adjustment.*

### SAFETY GRIP 5 mm STANDARD

The table provides an overview of the most commonly used tire sizes.

For a complete product overview, please see our product selector at [www.nosted.com/trygg](http://www.nosted.com/trygg)

TIRE	WHEEL	ITEM NO.	TIRE	WHEEL	ITEM NO.	TIRE	WHEEL	ITEM NO.
320/85	20	512035	440/65	28	512030	480/80	34	512020
12,4	24	512035	440/80	28	512020	520/70	34	512015
13,6	24	512035	480/65	28	512025	650/60	34	512010
320/85	24	512035	520/65	28	512025	18,4	38	512015
380/70	24	512030	540/65	28	512025	520/85	38	512010
400/80	24	512030	16,9	30	512020	540/65	38	512015
440/65	24	512030	380/85	30	512020	600/55	38	512010
480/70	24	512025	480/80	30	512015	650/75	38	512010
520/65	24	512025	16,9	34	512020	620/70	42	512010
11,2	28	512035	18,4	34	512015	650/65	42	512010
380/85	28	512020	460/85	34	512015			
400/80	28	512030	480/70	34	512015			

### SAFETY GRIP 5 mm TAILORED

The table provides an overview of the most commonly used tire sizes.

For a complete product overview, please see our product selector at [www.nosted.com/trygg](http://www.nosted.com/trygg)

TIRE	WHEEL	ITEM NO.	TIRE	WHEEL	ITEM NO.	TIRE	WHEEL	ITEM NO.
340/85	24	512035A	440/65	28	512030A	540/70	34	512015D
380/85	24	512030C	480/65	28	512025B	600/65	34	512010C
400/80	24	512030C	520/60	28	512025B	480/70	38	512015B
420/65	24	512030D	440/80	30	512020B	540/65	38	512015A
420/70	24	512030C	480/70	30	512015B	540/80	38	512010B
440/65	24	512030C	620/75	30	512010H	600/60	38	512010C
480/65	24	512025A	480/80	34	512015D	600/65	38	512010B
280/85	28	512035A	520/70	34	512015B	650/60	38	512010H
360/70	28	512030D	540/65	34	512015D	650/65	38	512010A

# SAFETY GRIP

## 6x7 mm

### THE GENTLE SNOW PLOW CHAIN!

Safety Grip 6x7 mm square chain is a strong lightweight chain designed for varied road tasks. It is the obvious choice for those who do not achieve good traction with studded tires, frequently put the chain on and off, or drive on changing road and surface conditions.

The square chain is gentle and leaves minimal marks on the surface, making it ideal for frequent snow plowing on paved areas or pedestrian streets, as well as for use in and out of halls. Safety Grip 6x7 mm comes with twisted side straps to minimize tire wear.

Track Chain: 6x7 mm. Side Strap: 6 mm. Side Chain: 5x34 mm.



#### DETAILS

Horizontal welded long and high wear bars (flat studs) that provide very good grip and durability.

The table provides an overview of the most commonly used tire sizes.

For a complete product overview, please see our product selector at [www.nosted.com/trygg](http://www.nosted.com/trygg)

TIRE	WHEEL	ITEM NO.	TIRE	WHEEL	ITEM NO.	TIRE	WHEEL	ITEM NO.
31x15,5	15	513305	380/85	24	513399	480/70	28	513551
13,6	16	513387	400/80	24	513397	520/60	28	513551
425/55	17	513305	405/70	24	513397	540/65	28	513551
10,5/80	18	513302	420/85	24	513399	600/65	28	513602
280/70	18	513179	440/65	24	513397	16,9	30	513551
320/80	18	513387	440/80	24	513313	380/85	30	513399
340/80	18	513387	460/65	24	513397	420/70	30	513399
405/70	18	513396	480/65	24	513313	440/80	30	513551
12	20	513396	480/70	24	513399	480/65	30	513551
12,4	20	513387	520/65	24	513313	520/65	30	513551
14	20	513397	540/65	24	513313	540/65	30	513399
14,9	20	513396	385/95	25	513399	18,4	34	513418
320/70	20	513504	16	25	513551	460/85	34	513418
360/70	20	513387	17,5	25	513399	420/85	38	513418
365/85	20	513399	445/95	25	513551	480/70	34	513418
380/70	20	513388	600/65	25	513602	480/80	34	513418
395/80	20	513396	16,9	26	513399	520/70	34	513418
400/70	20	513396	18,4	26	513551	540/65	34	513418
405/70	20	513396	480/80	26	513551	520/70	38	513419
420/65	20	513396	600/50	26,5	513602	540/65	38	513419
550/45	22,5	513397	14,9	28	513399	600/55	38	513766
500/60	22,5	513313	16,9	28	513551	600/65	38	513414
11,2	24	513387	380/70	28	513397	600/60	38	513415
14,9	24	513399	380/85	28	513399	540/80	38	513415
16,9	24	513399	380/85	28	513399	650/65	38	513416
15,5/80	24	513397	400/80	28	513399	710/60	42	513417
320/70	24	513387	440/65	28	513399			
360/80	24	513396	480/65	28	513399			

To order, contact [corporate@nosted.com](mailto:corporate@nosted.com) or +47 37 25 62 00



# SMT TRACTOR

SMT Tractor is a robust chain that provides excellent grip in various terrains - ice, stone, soil, and mud. It is a fully floating tractor chain designed for use in agriculture, forestry, and snow plowing. This chain is supplied pre-cut. If you cannot find the desired tire size, SMT Tractor can be produced upon request to fit your tire dimensions.

**SMT Tractor 8 mm:** Track chain: 8 mm. Side strap: 7 mm. Side chain: 8x50 mm. Hook: 9 mm.

**SMT Tractor 9,5 mm:** Track chain: 9 mm. Side strap: 9.5 mm. Side chain: 8x50 mm. Hook: 10 mm.

**SMT Tractor 11 mm:** Track chain: 11 mm. Side strap: 9.5 mm. Side chain: 9.5x62.5 mm. Hook: 11 mm.



## DETAILS

SMT Traktor features oversized studs, meaning studs with a larger diameter than the link they are mounted on, which provides longer durability and better grip.

The table provides an overview of the most commonly used tire sizes.

For a complete product overview, please see our product selector at [www.nosted.com/trygg](http://www.nosted.com/trygg)

### 8 mm

TIRE	WHEEL	ITEM NO.
11,2	24	602505
13,6	24	602521
280/85	24	602505
340/85	24	602521
380/70	24	602394
440/65	24	602394
480/65	24	602308
480/65	28	602309
540/65	28	602313
16,9	30	602542
18,4	30	602552
420/85	30	602542
16,9	34	602552
18,4	34	602553
540/65	34	602315
13,6	36	602523
340/85	36	602523
16,9	38	602553
600/65	38	602320

### 9,5 mm

TIRE	WHEEL	ITEM NO.
11,2	24	603505
13,6	24	603521
280/85	24	603505
340/85	24	603521
380/70	24	603394
440/65	24	603305
480/65	24	603308
480/65	28	603309
540/65	28	603313
16,9	30	603550
18,4	30	603552
420/85	30	603550
540/65	30	603314
16,9	34	603552
18,4	34	603553
600/65	34	603316
13,6	36	603523
340/85	36	603523
16,9	38	603553
18,4	38	603554
460/85	38	603554
650/65	38	603321
650/65	42	603323

### 11 mm

TIRE	WHEEL	ITEM NO.
440/65	24	605305
480/65	24	605306
480/65	28	605309
540/65	28	605313
16,9	30	605550
18,4	30	605552
420/85	30	605550
540/65	30	605314
16,9	34	605552
18,4	34	605553
540/65	34	605315
600/65	34	605316
16,9	38	605553
18,4	38	605554
460/85	38	605554
600/65	38	605320
650/65	38	605321
650/65	42	605323

### Timber Trailer - SMT 8 mm

TIRE	WHEEL	ITEM NO.
400/60	15,5	602001 Igländ 480
500/50	17	602005 Igländ 580
500/50	17	602035 Palms 10U*
19,0/45	17	602002 IGLAND spesial
520/50	17	602006
425/50	18	602004

\* Delivered with tightening chain as standard.

To order, contact [corporate@nosted.com](mailto:corporate@nosted.com) or +47 37 25 62 00

# SMT FLEXI

SMT Flexi is available in two sizes: 8 and 9.5 mm. The chain must be adjusted—using simple hand adjustments without tools, the chain can be fitted to both new and worn tires, and also adjusted after changing tire sizes. For other tire sizes not listed in the price list, we offer SMT Tractor.

Track Chain: 8/9.5 mm. Side Strap: 8/9.5 mm. Side Chain: 8x50 mm.



## DETALJER

8.8 / 10.45 mm round studs. SMT Flexi is equipped with over-sized studs, meaning studs with a larger diameter than the link they are mounted on, which provides longer durability and better grip.

The table provides an overview of the most commonly used tire sizes.

For a complete product overview, please see our product selector at [www.nosted.com/trygg](http://www.nosted.com/trygg)

## 8 mm

TIRE	WHEEL	ITEM NO.	TIRE	WHEEL	ITEM NO.	TIRE	WHEEL	ITEM NO.
31x15,50	15	602909	14/80	20	602904	320/70	24	602904
10,0/75	15,3	602908	16/70	20	602907	320/85	24	602902
10,5/70	15,5	602908	280/70	20	602906	360/70	24	602903
280/60	15,5	602908	280/85	20	602906	360/80	24	602903
400/60	15,5	602909	300/70	20	602906	380/70	24	602903
10	16,5	602908	340/75	20	602904	380/85	24	602903
12	16,5	602908	360/70	20	602904	400/80	24	602903
15,0/55	17	602909	360/70	20	602907	400/80	24	602910
12,5	18	602909	360/80	20	602904	405/70	24	602910
15,0/70	18	602909	365/80	20	602904	420/65	24	602910
15,5/55	18	602909	365/80	20	602907	420/70	24	602910
15,5/65	18	602909	375/75	20	602907	440/65	24	602910
12,5/80	18	602906	380/70	20	602907	440/70	24	602910
325/70	18	602906	38x14,00	20	602909	440/80	24	602911
325/80	18	602906	405/70	20	602907	445/70	24	602910
335/80	18	602909	41x14,00	20	602907	460/65	24	602910
340/65	18	602909	420/65	20	602907	460/70	24	602910
365/70	18	602909	425/75	20	602903	480/65	24	602911
405/70	18	602907	43x16,00	20	602907	480/70	24	602911
8	20	602905	445/65	22,5	602910	495/70	24	602911
8,25	20	602905	8,3	24	602905	500/70	24	602911
9,5	20	602905	9,5	24	602905	520/65	24	602911
10,5	20	602906	11,2	24	602902	400/60	26,5	602903
11,2	20	602906	280/58	24	602902	440/65	26,5	602910
12,5/80	20	602906	16.0/70	24	602910	11,2	28	602902
260/80	20	602906	19,5L	24	602911	440/65	28	602910
12,5	20	602904	300/70	24	602904	480/65	28	602911
14,5	20	602904	320/70	24	602902	41x14,00	220	602904

To order, contact [corporate@nosted.com](mailto:corporate@nosted.com) or +47 37 25 62 00

# SMT FLEXI

The table provides an overview of the most commonly used tire sizes.

For a complete product overview, please see our product selector at [www.nosted.com/trygg](http://www.nosted.com/trygg)

## 9,5 mm

TIRE	WHEEL	ITEM NO.
25x10,00	12	603904
400/70	18	603907
405/70	18	603907
14,5	20	603907
14/80	20	603907
360/80	20	603907
365/80	20	603907
375/75	20	603907
395/85	20	603907
400/70	20	603907
455/70	20	603905
18	22,5	603905
400/60	22,5	603907
16,9	24	603906
16/70	24	603905
19,5L	24	603911
320/85	24	603910
340/85	24	603907
360/70	24	603907
380/70	24	603907
380/85	24	603903
400/80	24	603905
405/70	24	603905
420/65	24	603905
420/70	24	603905
420/85	24	603906
440/65	24	603905
440/70	24	603905

TIRE	WHEEL	ITEM NO.
440/80	24	603911
445/70	24	603905
480/65	24	603911
480/70	24	603911
495/70	24	603911
500/70	24	603911
520/65	24	603911
16	24/25	603901
445/80	25	603911
445/95	25	603901
16,9	26	603906
440/65	26,5	603905
16,9	28	603901
380/70	28	603903
380/85	28	603903
380/85	28	603906
400/80	28	603906
420/70	28	603906
420/85	28	603901
440/65	28	603905
440/80	28	603901
480/65	28	603911
16,9	30	603901
18,4	30	603901
18,4	30	603902
380/85	30	603906
420/70	30	603906
420/85	30	603901

TIRE	WHEEL	ITEM NO.
440/80	30	603908
460/85	30	603901
460/85	30	603902
480/70	30	603908
520/70	30	603908
540/65	30	603908
16,9	34	603901
18,4	34	603902
420/70	34	603901
420/85	34	603902
440/80	34	603901
460/85	34	603902
480/70	34	603902
480/70	34	603908
520/70	34	603909
540/65	34	603908
600/65	34	603909
15,5	38	603901
16,9	38	603902
18,4	38	603909
460/85	38	603909
460/85	38	603909
480/70	38	603902
480/70	38	603909
480/80	38	603909
520/70	38	603909
540/65	38	603909

# SM2D TRACTOR

## 9.5 mm – preferred chain for forestry work

SM2D Tractor 9.5 mm is specially designed for those who use the tractor for forestry work. The chain provides excellent grip in terrain, on ice, and on bare rock. It features a fully floating design with an asymmetric 2-pattern design. This ensures a lighter chain without compromising traction and tire protection.

It comes with tightening rail as standard, which ensures a tight and stable chain while protecting the sidewall of the tire.

Track Chain: 9.5 mm. Side Strap: 9.5 mm. Side Chain: 8.5 mm.



### DETAILS

10.45 mm round studs. SM2D Tractor features oversized studs, meaning studs with a larger diameter than the link they are mounted on, which provides longer durability and better grip.

The table provides an overview of the most commonly used tire sizes.

For a complete product overview, please see our product selector at [www.nosted.com/trygg](http://www.nosted.com/trygg)

TIRE	WHEEL	ITEM NO.	TIRE	WHEEL	ITEM NO.
500/50	17	613310	480/65	28	613309
500/60	22,5	613629	480/70	28	613404
600/50	22,5	613593	600/65	34	613766
380/85	24	613380	600/65	38	613320
420/70	24	613402			

Not in stock, made to order.

## 11 mm

SM2D Tractor 11 mm is developed for large machines used in forestry work. This is a fully floating studded chain with two rows of studs across its width. The chain features two studs on each link, providing excellent grip in the forest, on ice, and on bare rock. The chain is compact, offering good protection for the tire. Tightening chain can be purchased as an optional extra for all chain models.

Track Chain: 11 mm. Side Strap: 9.5 mm. Side Chain: 9.5x50 mm.



### DETAILS

12,5 mm round studs. SM2D Tractor features oversized studs, meaning studs with a larger diameter than the link they are mounted on, which provides longer durability and better grip.

The table provides an overview of the most commonly used tire sizes.

For a complete product overview, please see our product selector at [www.trygg.no/trygg](http://www.trygg.no/trygg)

TIRE	WHEEL	ITEM NO.	TIRE	WHEEL	ITEM NO.
18,4	30	615552	650/65	38	615321
16,9	34	615552	16,9	38*	615553
600/65	38	615320			

\* Delivered with tightening chain as standard.



# PRACTICAL INFO

## CHAIN INSTALLATION

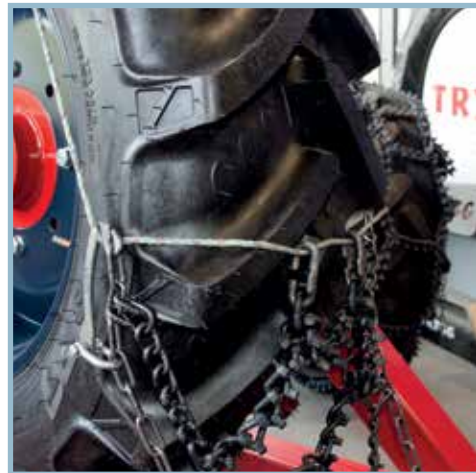
**1.** Read the instruction manual and check if any special adjustments are needed for the item number you have purchased.



**2.** Lay out the chain behind the tire with the studs facing up. Perform any adjustments mentioned in step 1.



**3.** Place some rope over the ribs of the tire or through the rim. Attach the chain connectors to the rope and the side chain. Then pull the chain outwards to the side.



**4.** If you are installing the chain alone, it is recommended to slide the chain under the tire before you start driving the chain on. Drive about half of the chain on and then pull the remaining chain out to the side. Drive on the rest of the chain. If you are two people, it is advised that one person stands behind the tire and pulls the chain out to the side while driving.



5. Secure the connector on the track, and install the inner and outer side chains. Finally, attach the tail as the last side strap. If it is redundant, you can cut it off.



## Common Installation Mistakes

1. Incorrect installation of the shackle. If the head of the bolt on the shackle faces towards the tire, it can wear and damage the tire. Always install the shackle so that the head of the bolt faces away from the tire.



2. Incorrect installation of the side chain on the locking arm. Placing the side chain inside the locking arm can cause wear and damage to the tire. Always place the side chain on the outside of the locking arm.

Drive a few hundred meters to allow the chain to settle and stretch, and then re-tighten the chain on the track and on the side.

# SHORTENING

The chain must always be well adapted to the tire. When driving, it is important to have the chain snug and centered on the tire surface. The chain is accompanied by the manual "Installation, use and safety".

## SMT Tractor Flexi, Tractor, Fast Trac, Safety Grip



The chain comes with a table of customization options. If the side chain needs to be adjusted, always do this first.



The last section can be removed completely. On the last two sections the length can be adjusted.



The length is adjusted with a cutting disc on the light chains.



The length of the side chain is regulated very easily and safely in several positions.

## Reparation Parts



1.



2.



3.



4.



5.

1. Z-hook and S-hook are used to repair broken studded chains. S-hook is used inside the chain and Z-hook is used in ends.
2. Shackles are used for emergency repair of broken hooks, but wears faster than a regular hook. It is recommended to replace broken hooks with similar new ones as fast as possible.
3. Lap link for side chain. Do not use inside the chain pattern or as a replacement for broken hook.
4. Forged and hardened pin coupling. This is our main component for lasting repair of breakage anywhere on the chain.
5. Tool for easy opening of small and large pin connections.

# SAFETY – WARRANTY

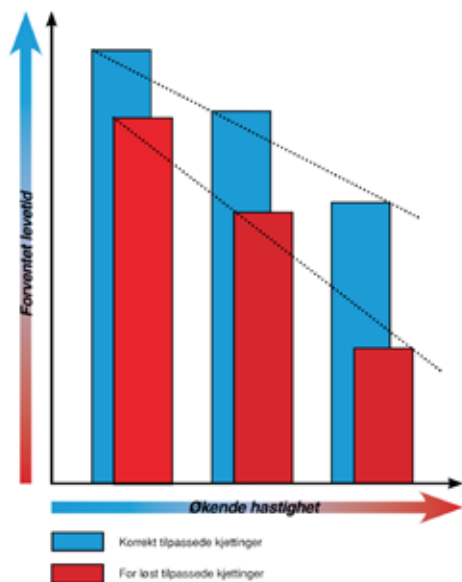
## Both tests and experiences say the same thing:

1. The faster you drive with the chain, the quicker both wear and breakage occur.
2. Incorrect tensioning of the chain significantly increases wear.
3. The combination of points 1 and 2 can result in a worn-out and/or broken chain after just a few hours of use.

The chain should be as tight as possible but must still be able to move on the tire. This means it should rotate around the tire during driving. Lack of movement will significantly increase tire and chain wear. A fully floating chain should not be too loose, nor should it be so tight that it gets stuck.

## The faster you drive, the more easily the chain moves.

This means that at high speeds, the chain should be tightened more than at lower speeds. At high speed and/or if the chain is too loosely fitted, it will be damaged by striking against the ground.



## BREAKAGE GUARANTEE

Nøsted & is offers a breakage guarantee on transport and tractor chains. This guarantee covers our entire range for transport and tractor use. Many years of experience and testing under demanding conditions have made us so confident in the quality of TRYGG tire chains that we guarantee against breakage due to manufacturing defects.

Should a breakage occur due to a manufacturing defect, your dealer will assist with repairs or, if necessary, replace the chain.

The guarantee is valid provided that the chain has been used according to the manufacturer's instructions (as specified in the accompanying user manual). The wear on the studs must not have reached the weld bead. The guarantee is valid for one year from the date of purchase upon presentation of a receipt/invoice. Any claims must be documented with a photo and a claim form.

## SAFETY

### Towing/Securing/Lifting

Tire chains are specially made for their intended purpose. The chains are brittle and hard compared to chains used for lifting and securing. Therefore, tire chains should only be used for their intended purpose, not for towing, securing, or lifting!

### Traction and Speed

When using chains, driving speed should be reduced. This decreases wear on both tires and chains. When using chains on bare roads, traction is significantly reduced, so drive with extra caution.

### Installation

Read the installation instructions carefully and follow them. If you do not have installation instructions, make sure to obtain them before installing the chains.

### Difficult Conditions

Apply the chains before driving conditions become difficult and before you get stuck. The chains are not designed for spinning, as this increases the risk of damage to the chains, tires, and vehicle.

### Damage/Defects

Never drive with a damaged/defective chain. Any faults should be repaired before continuing to drive. Driving with a defective chain can lead to significant material damage and dangerous situations.

### Regulations

Follow the regulations and the vehicle manufacturer's instructions for the proper use of chains. Correct installation and an adequate number of chains are prerequisites for safe driving. See the next page.

### Warranty

TRYGG chains come with a warranty against manufacturing defects. This warranty is valid for 1 year from the purchase of the chains. The warranty does not cover user errors.

### Liability

Our liability is limited to the replacement of chains with defects. Nøsted & does not take responsibility for any damage or wear to vehicles, tires, studs, equipment, or personnel. Consequential damages due to operational downtime are also not covered. Wear that is not due to manufacturing defects in the chains will not be covered.

### Claims

Claims are processed based on a submitted claim form or, if necessary, inspection. Chains may be returned to Nøsted & Co. by prior arrangement and following written guidelines that will be provided.

### Returns/Cancellations

All returns must be agreed upon in advance with Nøsted & Co.



# CHAIN USE REGULATIONS

## PROVISIONS ABOUT THE USE OF TIRE CHAINS

If you drive a vehicle with a permissible total weight of over 3,500 kg, you must use chains when you are going to drive on roads with snow and ice.

During the period when a minimum pattern depth of 5 mm is required, chains must be included, regardless of the driving conditions. The chains must be adapted to the wheels of the vehicle and at all times provide contact between the chain and the road surface.

They must be made of metal / steel, be suitable for driving conditions and withstand the stress of driving in wintery conditions.

### Motor vehicle with a permissible total weight over 3,500 kg must have at least three chains:

- 1 adapted front wheels
- 2 adapted drive wheels

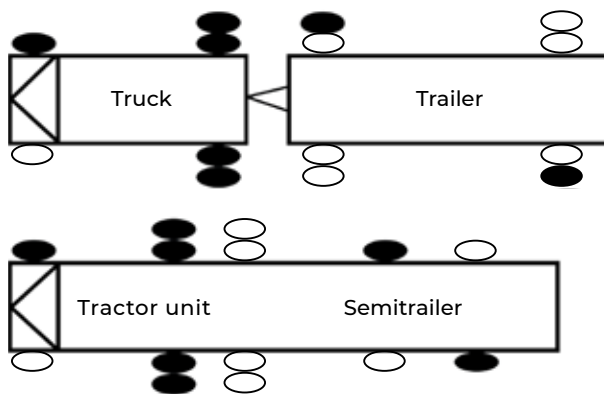
### Trailer

(Motor vehicle and trailer when both the vehicles have a permissible total weight over 3,500 kg) must carry at least seven chains if the motor vehicle has twin wheels on the drive shaft.

- 1 adapted to the front wheel of the motor vehicle.
- 4 adapted to the motor vehicle's drive wheels.
- 2 adapted trailer wheels.

**If the motor vehicle in a train has single wheels on the drive shaft, or uses twin chains, at least five chains must be carried.**

- 1 adapted to the front wheel of the motor vehicle.
- 2 adapted to the motor vehicle's drive wheels.
- 2 adapted trailer wheels.




Tire with chain = ●  
Tire without chain = ○







Nøsted & AS  
Telefon: +47 38 27 25 50  
E-post: post@nosted.com

 TRYGG

 Nøsted&

 @trygg\_chains

 @nosted\_and

Takk for at du velger TRYGG  
Del dine bilder med oss! #tryggchains #tryggkjetting